

**COUNTRY CASTLE**

**Installation Specifications**  
At [www.CORONADO.com](http://www.CORONADO.com) product specifications can be downloaded in CSI format.

**Choices Specific to Country Castle**

**Standard Colors:** Antique Cream, Aspen, Chalk, Drizzle Brown, Grey, Lempeck, Madison County, Redwood, Sunset Blend or Any Custom color

**Gross Joint Width:** Standard 1/2" Gross Joint

**Grouting Options:** Brushed, Deep Raked, Full Smooth, Tied or Full Brushed

**Gross Joint Color:** Natural Grey, Natural Off-White or Complementary Color

**Accessories:** Corners, Complementary Tiles, Wall Caps, Post Caps and more. (See Accessories section of binder)

**Special Installation Notes**

**Patterns:** Stone should be installed in a horizontal ashlar pattern. Do not install stones vertically. Blend the stone on the wall from several different boxes to ensure proper color and size variation.  
**See catalog photos for recommended installation pattern.**

**Chalk Lines:** Should be used by installer to ensure a straight and level pattern.

**Vertical Joints:** Avoid creating 2 medium or 3 small stones in height.

**Horizontal Joints:** Avoid exceeding 6" to 8" in length.

**Sealing:** Not required. However, if installed on an exterior exposed to excessive water from runoff or improper drainage, we suggest the product be sealed in that particular area to prevent it from staining or spalling during freeze-thaw cycles.

**Freeze-Thaw:** When installing stone in a freeze-thaw environment, extra care should be taken to ensure a full coverage of mortar on the back of each stone, which will prevent water pooling behind the stone after it's been installed.

**Installation Info:** Download Coronado's latest installation instructions at [www.coronado.com](http://www.coronado.com) for information on mortar and installation recommendations.

**Profile Properties**

**Size:** Stone sizes range from 1 1/2" to 7 1/2" in height and 4" to 20" in length (nominal).

**Thickness:** 1 1/2"

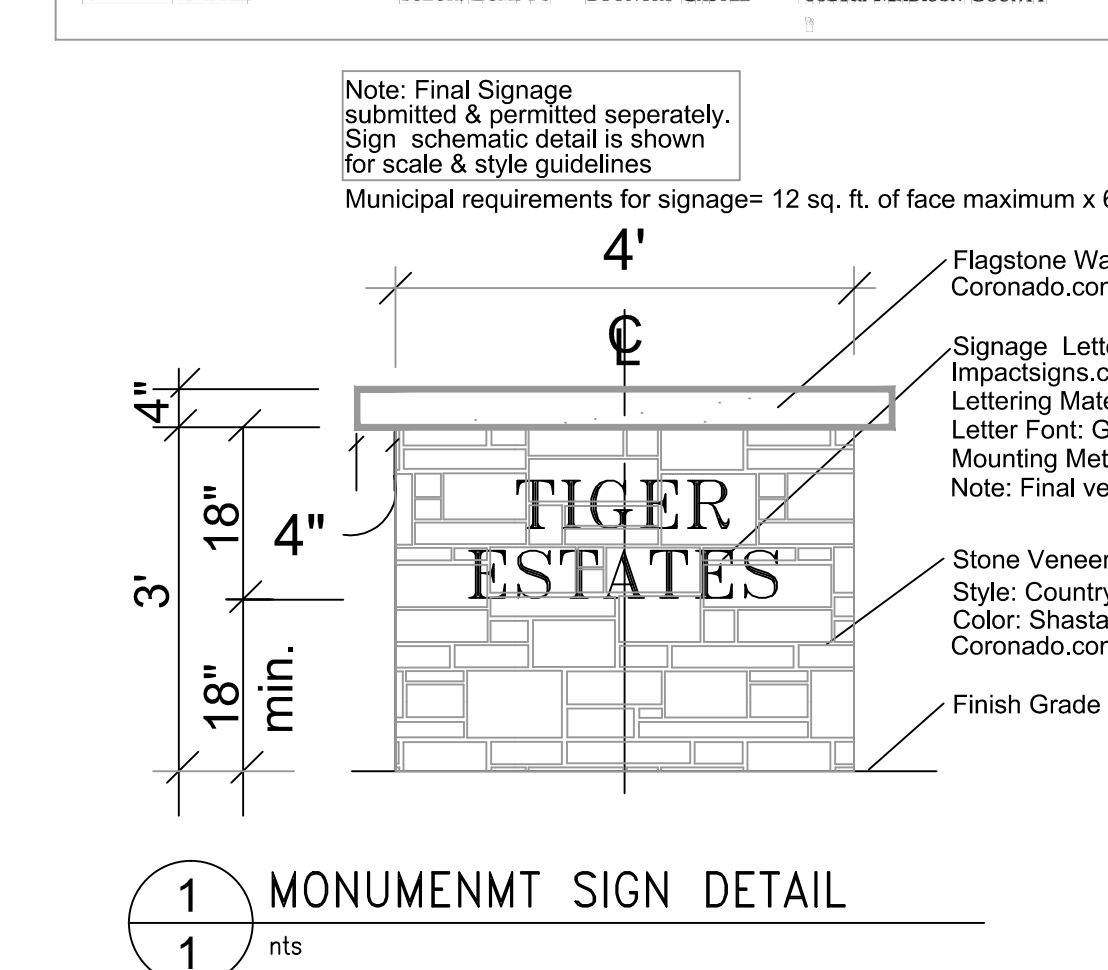
**Weight:** 7 to 10 lbs. per square foot.

**Packaging:** Available in big boxes (100 sq ft Flat & 100 sq ft Corner) or Dura-Paks (12.5 sq ft Flat & 12.5 sq ft Corner).

**When purchasing Country Castle, coverage is based on installation with a 1/2" joint at the back of the stone.**

1/2" Deep Raked Gross Joint      1/2" Raked Gross Joint

COUNTRY CASTLE      COLOR: LOMPOC      COUNTRY CASTLE      COLOR: MADISON COUNTY



**CORONADO**  
The Leader in Manufactured Stone, Brick and Tile Products

**CMU Wall /Stone on One Side with Flagstone Wall Cap**

**Coronado Flagstone Wall Cap**

**Coronado Stone Veneer 1 1/4" to 2"**

**Polymer Modified Mortar**

**Adhesive Bond Coat As Per Mfg. Specs**

**8" CMU Wall**

**Rebar Where Occurs**

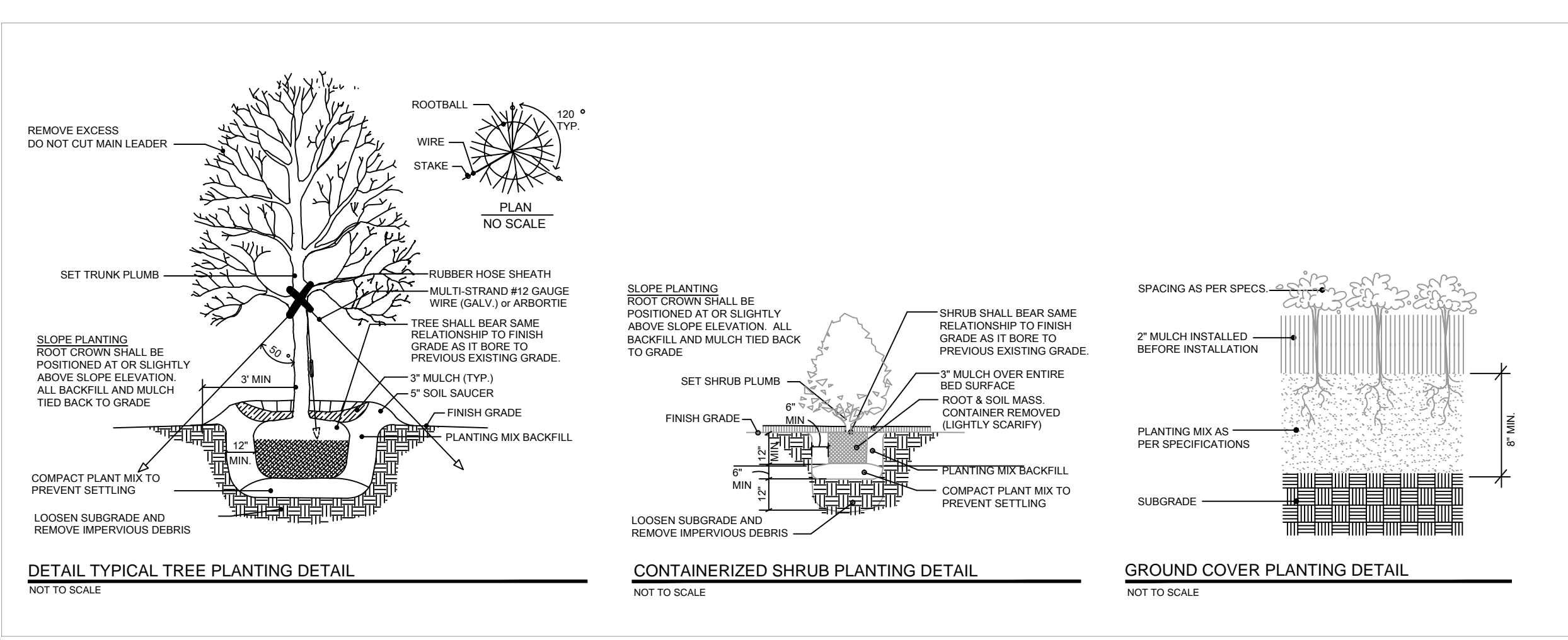
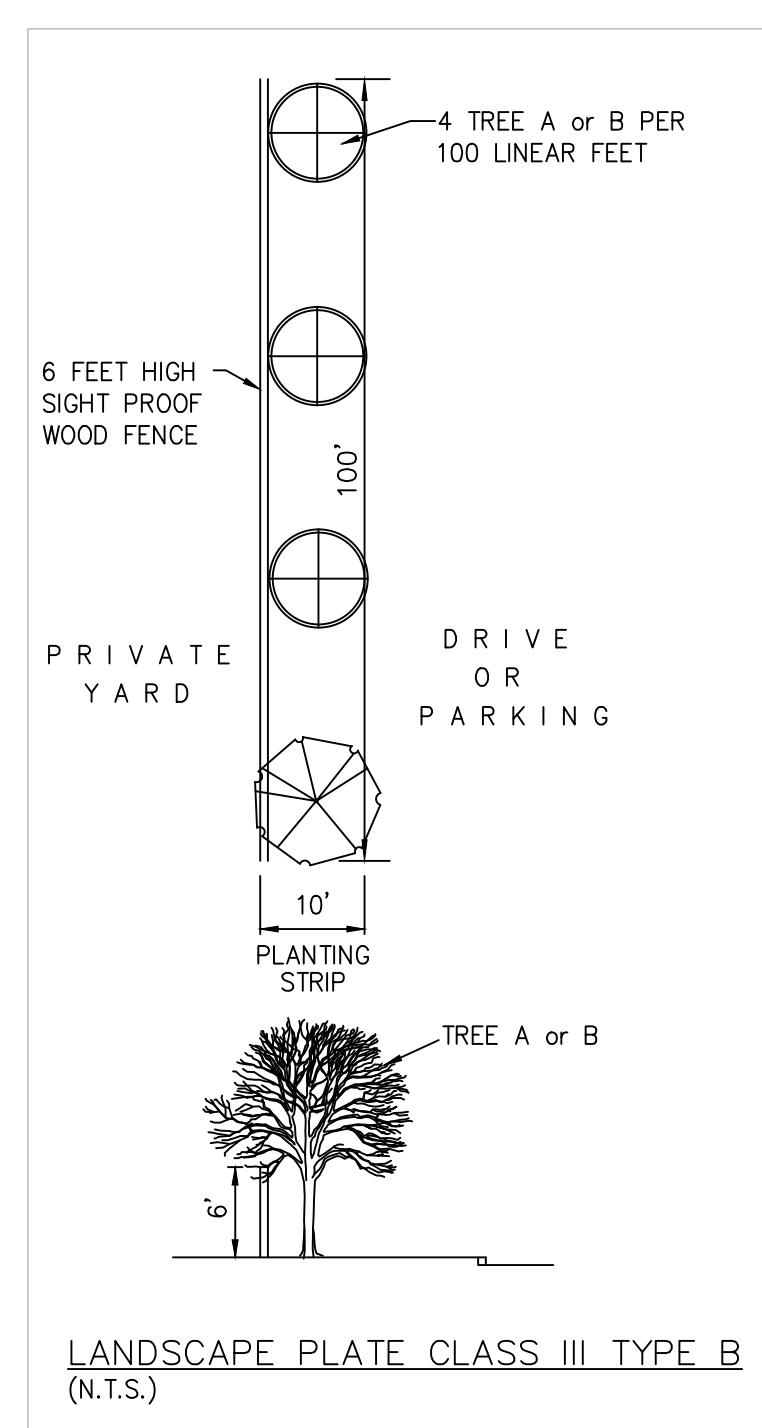
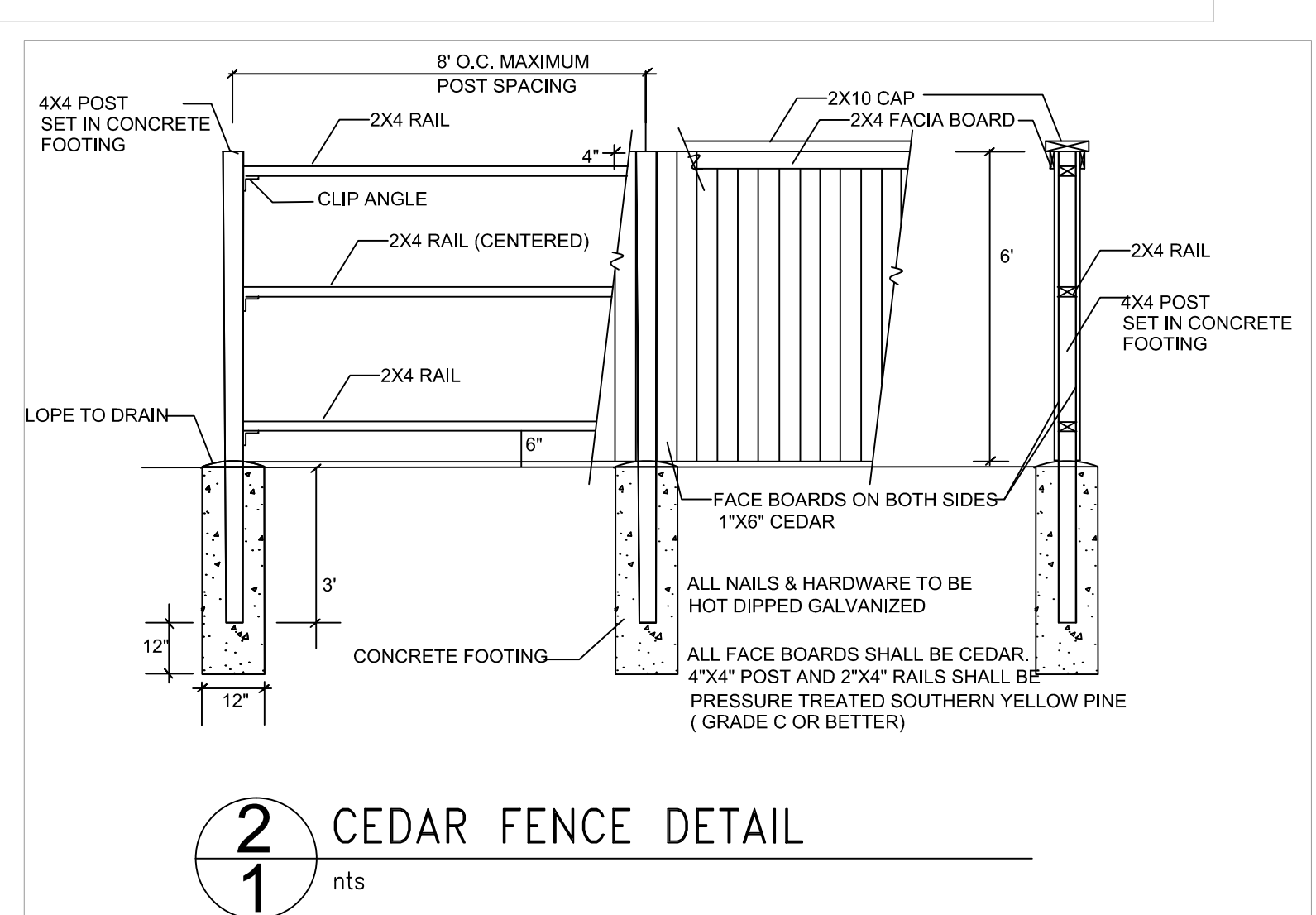
**Foundation Weep Screenshot**

**Excludes Treated or Painted CMU Walls "NOT TO SCALE"**

© Copyright 2010 Coronado Stone

PLANT SCHEDULE

TREES									
SYM	QTY	SCIENTIFIC NAME	COMMON NAME	SIZE	SPACING	NOTES	TREE CAT.	DENSITY	UNITS
NO	6	Quercus 'nuttallii'	Nuttall Oak	3.5" Cal	As shown	Full, Well Shaped	1.0	21	
NCM	3	Lagerstroemia indica 'Natchez'	Natchez Crepe Myrtle	1.5" Avg.	As shown	3-5 Canes	.75	3.3	
MPH	33	Ilex X latifolia 'miss patrica'	Miss Patrica Holly	4-5'Ht., 1" Cal.	As Illustrated	Full to ground	.5	9	
CR	15	Cryptomeria japonica 'radicans'	Cryptomeria	5-6' Ht./ 1.5" avg	As Illustrated	Full to ground	.5	12	
TM	5	Acer buergerianum	Trident Maple	2" Cal	As Illustrated	Full, Well Shaped	.75	7.5	
								52.8	DENSITY UNITS
SHRUBS									
DBH	33	Ilex cornuta burfordii 'nana'	Dwarf Burford Holly	3 gal.	3' o.c.	Full, Well Shaped			
GROUND COVER									
VL	15	Liriope muscari 'variegata'	Variegated Liriope	4" pots	12" o.c.				
SOD	755 SY	Cynodon dactylon 'Tiffway 419'	Tiffway 419 Sod (or equal) - Coordinate with Civil						



**GREENSCAPE** Design

7002 SUMMER AVE. MEMPHIS, TENNESSEE 38113  
901.372.2100 fax 901.372.3100 [www.greenscape.com](http://www.greenscape.com)

Landscape Design

LANDSCAPE PLAN  
PHASE 2  
SPOTSWOOD VILLAGE P.D.

OWNER:  
14 LOTS

WARD 46, BLOCK 43, PARCEL 8-11

PD 90-346  
TIGER ESTATES, LLC  
1.549 ACRES  
october 2018  
SHEET 1 of 1

**SR CONSULTING, LLC**  
ENGINEERING - PLANNING  
5909 Shelby Oaks Drive  
Suite 200  
Memphis TN 38134  
901-373-0380  
(fax) 373-0370  
[www.SRCE-memphis.com](http://www.SRCE-memphis.com)

ALAN JAMES W. REGISTERED PROFESSIONAL LANDSCAPE ARCHITECT